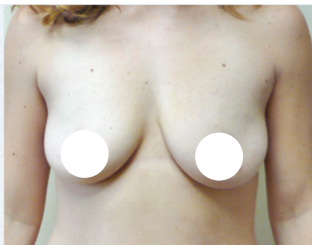


## Lifts and Implants

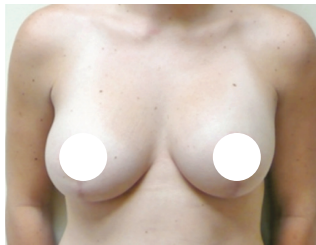
Misshaped, saggy, and deflated breasts often occur following breastfeeding or with excessive weight loss. These patients will benefit from a combination of both a lift and an implant done simultaneously. Although incisions around the nipple and under the breast are necessary, the end result is often very gratifying and the scarring will fade over time.

### Results of Simultaneous Lifts with Trans-Axillary Implants

A 35 year old woman with deflated, post-pregnancy B cups desired a full C cup. 350cc saline implants were placed under the muscle using the Trans-Axillary technique combined with a simultaneous vertical lift (Mastopexy).

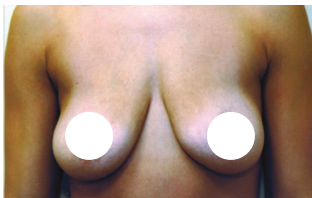


Before

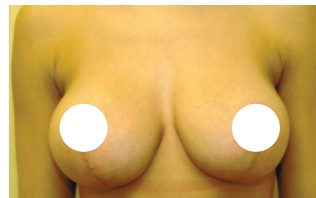


One Year After

A 38 year old woman with post pregnancy deflation desired to return to her pre-pregnancy full C cup. 380cc saline implants were placed under the muscle using the Trans-Axillary technique combined with a simultaneous vertical lift (Mastopexy).



Before



Three Years After

KIRK BRANDOW MD, FAACS is renowned as one of the premier cosmetic surgeons in the Philadelphia area.

As a top plastic surgeon in Philadelphia and New Jersey, Kirk Brandow MD, FAACS specializes exclusively in cosmetic surgery of the face, breast, and body. Dr. Brandow is certified by the American Board of Cosmetic Surgery and is internationally trained in cosmetic surgery.



To learn more, please call to schedule your confidential consultation with Dr. Brandow.



COSMOPOLITAN

The Philadelphia Inquirer



allure

#### PHILADELPHIA

##### Main Line

191 Presidential Blvd. North  
Suite 105  
Bala Cynwyd, PA 19004  
(610) 617.7949

##### Rittenhouse Square

2031 Locust St.  
Philadelphia, PA 19103  
(215) 977.2823

#### SOUTH JERSEY

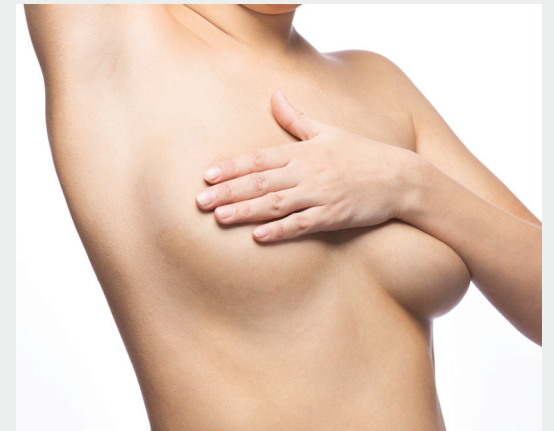
##### Somers Point

741 Bay Avenue  
Somers Point, NJ 08244  
(609) 653.2220

[www.BrandowClinic.com](http://www.BrandowClinic.com)

## Scarless Trans-Axillary Breast Implants

(Underarm Technique)



BRANDOW CLINIC  
COSMETIC SURGERY

[www.BrandowClinic.com](http://www.BrandowClinic.com)

## Candidates for Breast Implants

Patients as young as 18 and up to 70 years old are considered good candidates for breast implantation.

Breast implants can be used to enhance breast fullness/size, change breast shape, and restore volume lost during pregnancies or weight loss. These improvements can help a woman's self esteem and often have a major impact on their interpersonal relationships.

## Placement

The placement of implants, either above or below the pectoral muscle will influence the shape and appearance of the breasts. If very large implants are desired they are placed on top of the muscle (sub glandular). In general, the complication rate is much higher with sub glandular implants (capsular contracture and implant displacement), and the overall look tends to be more artificial or "fake."

Whereas implants placed under the muscle look and feel more natural and have fewer complications.



Implants Above Muscle



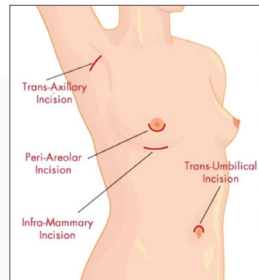
Implants Below Muscle

## Saline Vs. Silicone

There are two types of breast implants, saline and silicone. Silicone implants consist of a silastic outer shell filled with a cohesive silicone gel. Saline implants have a similar silastic shell, but are filled with a physiological saline solution. Although the new generation of silicone implants are still being studied, both types of implants have over 30 years of use on the national and international markets and are FDA approved.

Dr. Brandow exclusively uses saline implants.

## Incisions



There are 4 different incision locations used to place an implant:

- Trans-Areolar (nipple)
- Inframammary (underneath the breast)
- Trans-Axillary (under arm)
- Trans-Umbilical (belly button)

## Trans-Axillary Technique

Dr. Brandow has perfected the Trans-Axillary (under arm) technique, and has performed over 3,500 of these surgeries over the last 25 years. He developed an instrument specifically for this operation that facilitates the insertion of saline implants through an incision as small as one inch, which is ultimately discretely hidden under the arm.



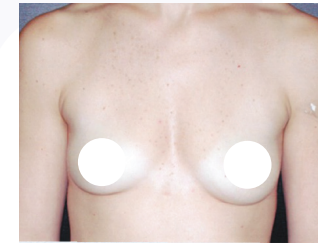
1" Trans-Axillary incision eight weeks after surgery.

Surgeries are performed in a state approved, outpatient surgery center with board certified anesthesiologists.

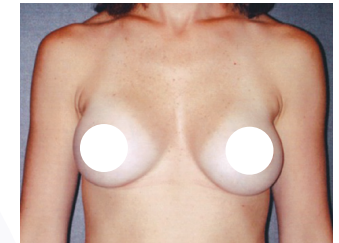
Patients return home on the same day and recover for 5 to 7 days before returning to work. The implants will sit very high for 3 to 5 weeks, and will slowly drop over the next 3 months. Exercise may be resumed after 3 weeks, and underwire bras should be avoided for 3 months.

## Results

A 32 year old woman with an A cup desired a full B cup. 275cc saline implants were placed under the muscle using the Trans-Axillary technique.

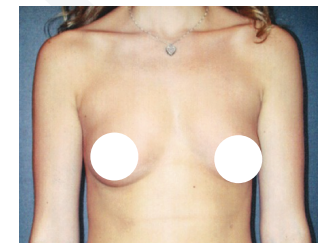


Before

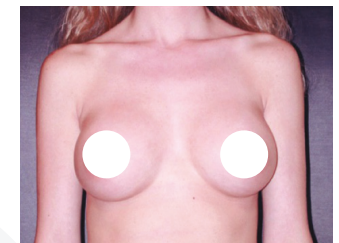


Three Years After

A 30 year old woman with an A cup desired a small C cup. 300cc saline implants were placed under the muscle using the Trans-Axillary technique.

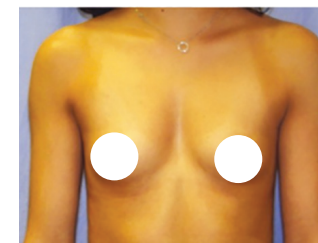


Before

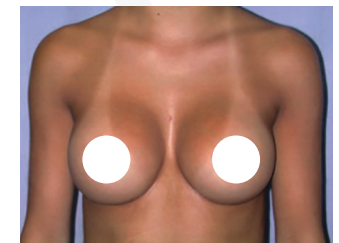


One Year After

A 24 year old woman with an A cup desired a full C cup. 375cc saline implants were placed under the muscle using the Trans-Axillary technique.



Before



One Year After